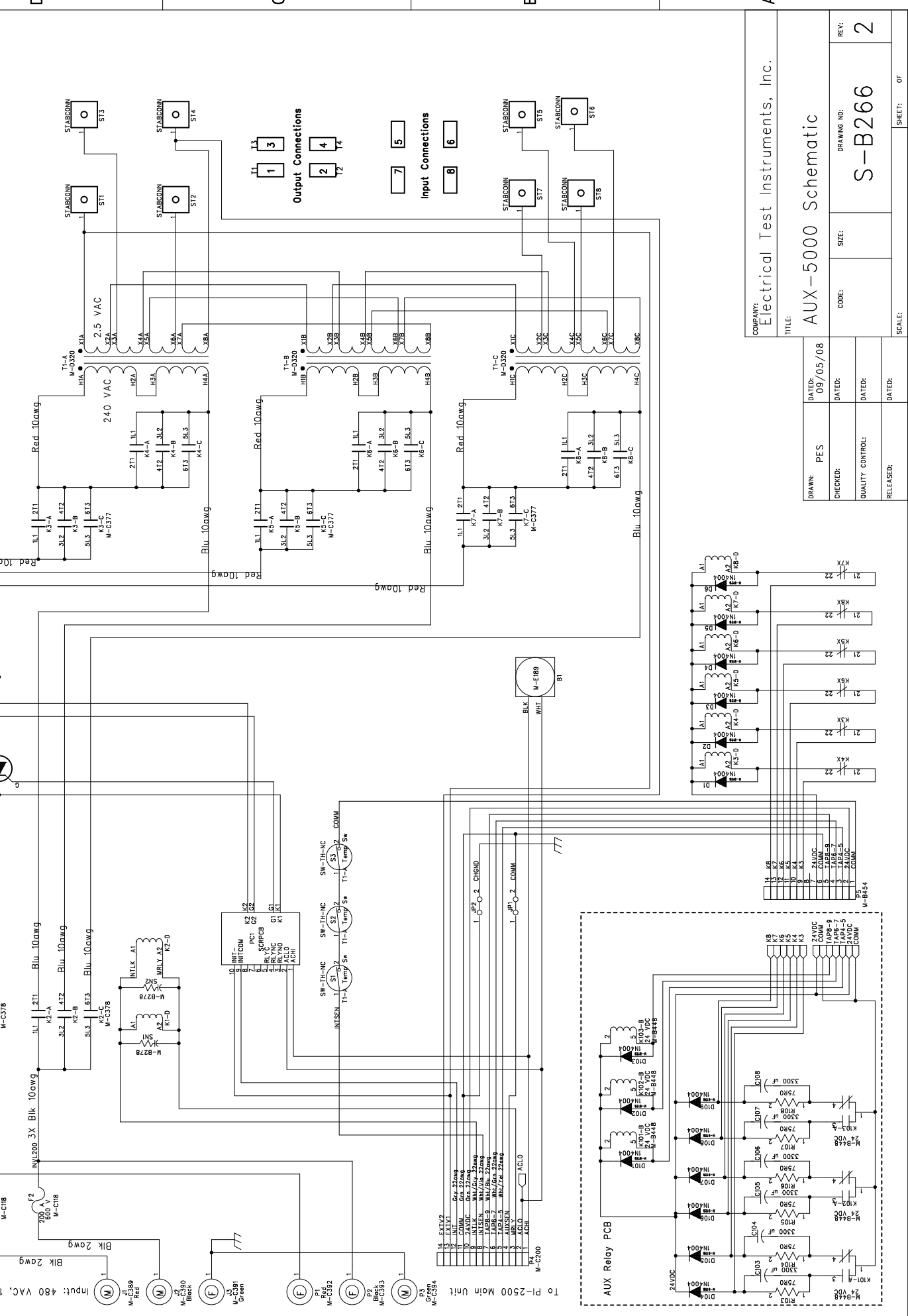






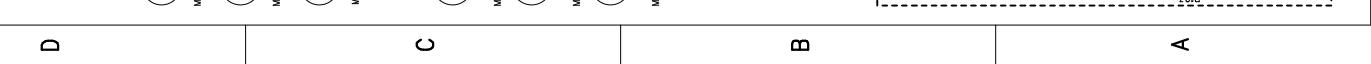
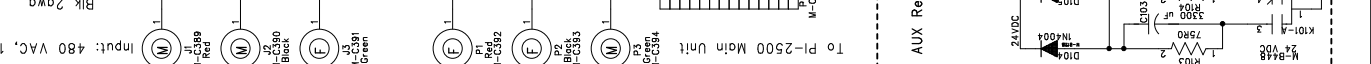
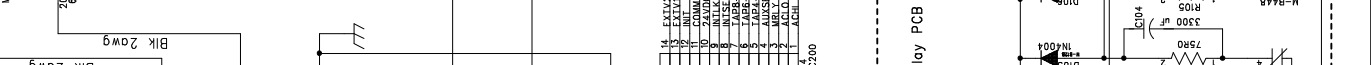
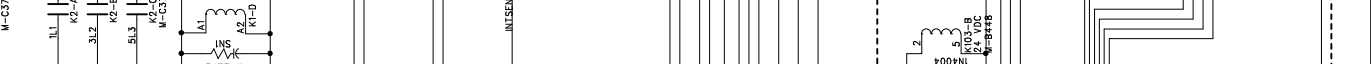
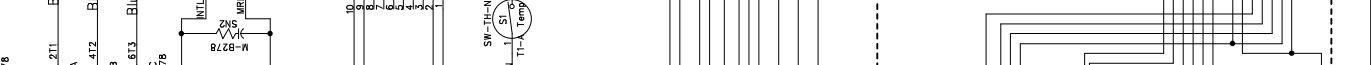
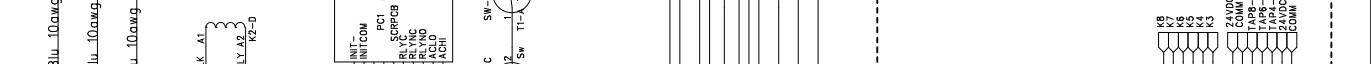
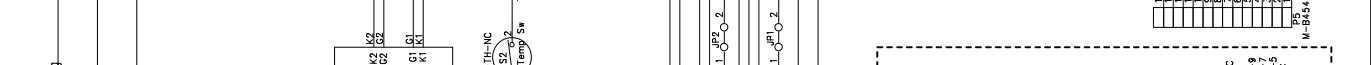
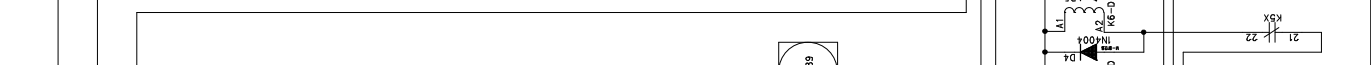
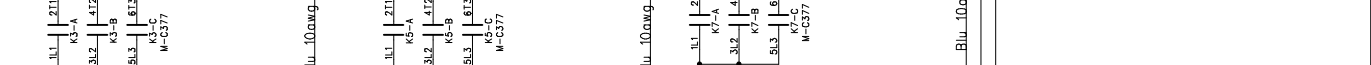
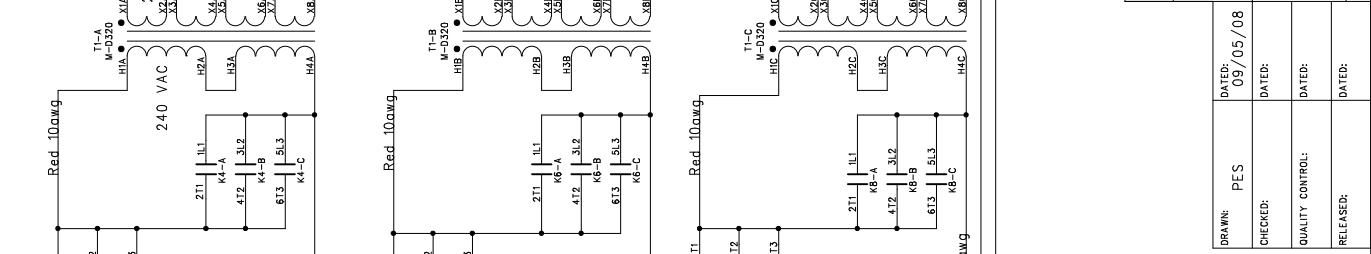
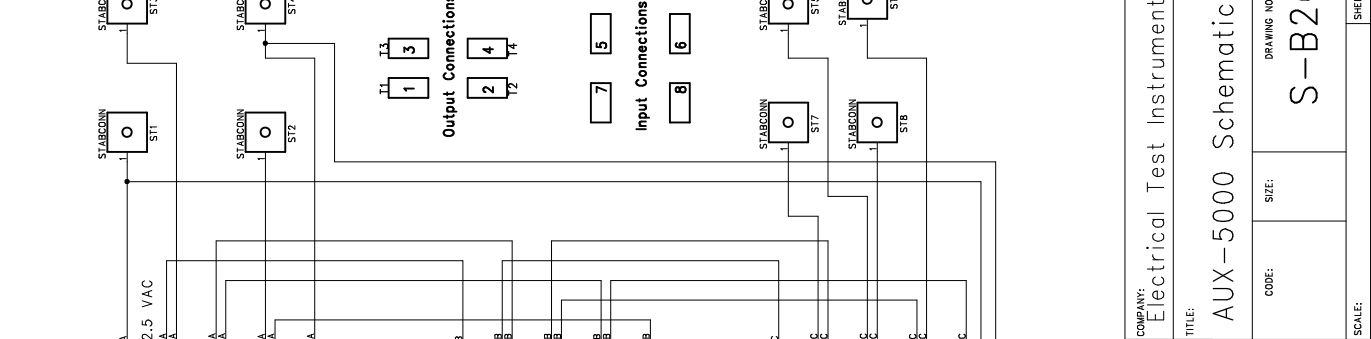
REV	DC No	DESCRIPTION	APP'D	DATE
0		Initial Issue		12/17/07
1		Change cti wiring. COMM-CHGND		10/08/08
2		Remove SSRs, add SCR end PCB		07/09/11

Ratio: 480:2.5 = 192  
 4000A/192 = 20.8A  
 120A/192 = 62.5A  
 40KA/192 = 208A



REV	DC No	DESCRIPTION	APP'D	DATE
0		Initial Issue		12/17/07
1		Change cti wiring. COMM-CHGND		10/12/08
2		Remove SSRs, add SCR end PCB		07/09/11

Ratio: 480:2.5 = 192  
 4000A/192 = 20.8A  
 120A/192 = 62.5A  
 40KA/192 = 208A



COMPANY: Electrical Test Instruments, Inc.	
TITLE: AUX-5000 Schematic	
DRAWN: PES	DATED: 09/05/08
CHECKED:	DATED:
QUALITY CONTROL:	DATED:
RELEASED:	DATED:
CODE:	DRAWING NO: S-B266
SIZE:	REV: 2
SCALE:	SHEET: OF